


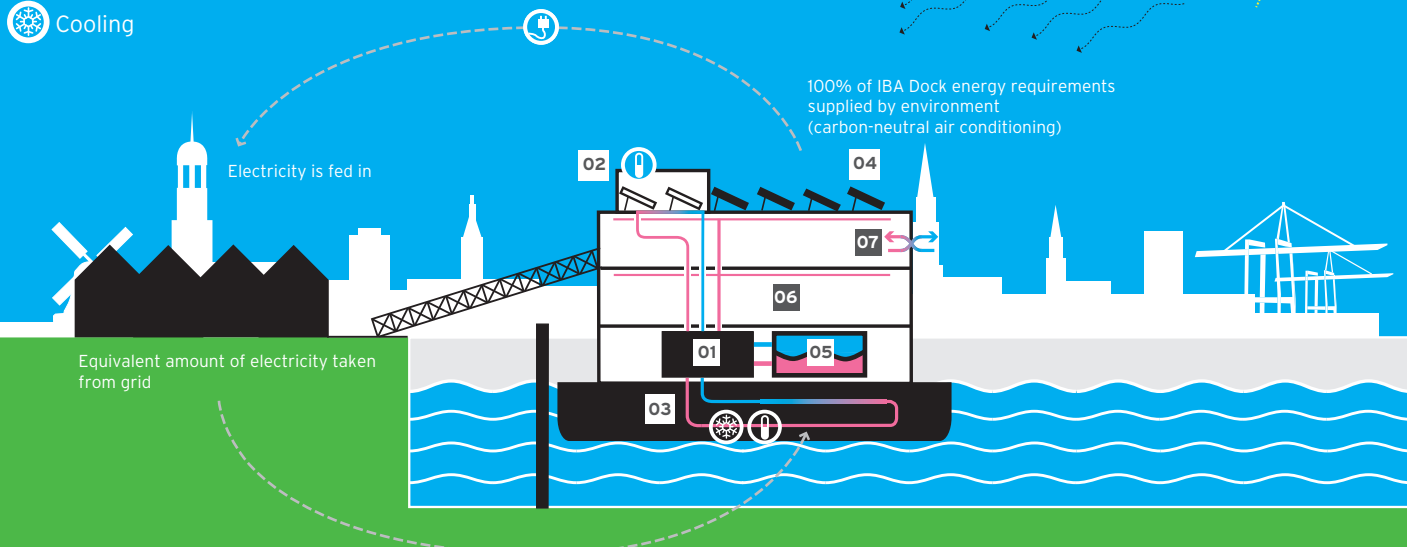
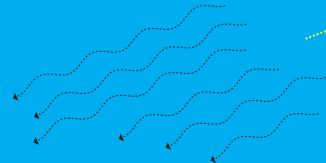
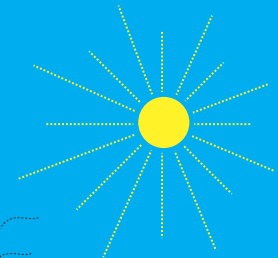


IBA DOCK powered by the sun and the river

-  Power generation
-  Heat generation
-  Cooling



100% of IBA Dock energy requirements supplied by environment (carbon-neutral air conditioning)

Electricity is fed in

Equivalent amount of electricity taken from grid

- 01** The energy management system (EMS) controls the distribution of heat and cold through-out the IBA DOCK and links the heat pump and solar thermal system.
- 02** The solar thermal plant uses the warmth of the sun to heat the building and supply hot water.
- 03** The brine/water heat pump uses warmth from the sun and port water to heat the building.
- 04** The photovoltaic plant produces the same amount of solar power per year as is required by the heat pump to heat the dock.
- 05** Heat storage tank
- 06** Heating and cooling ceilings keep supply temperatures low and maintain very comfortable conditions.
- 07** Ventilation plant with heat recovery system.

